



PAPAROA SCHOOL

Na to mahi kaha whiwhi ai
Success Through Effort

5th February 2026

NEWSLETTER 01

School Information



School App



FaceBook: Paparoa School

To enrol a student -

<https://enrolments.linc-ed.com/apply/NZ/1077>

Website: <https://www.paparoa.school>



<https://paparoa.schooldocs.co.nz>

Username: paparoa

Password: franklinrd

Bus Information - <http://song.easybus.nz>

School Hours

8.30am to 2.25pm

Morning Tea: 10.30am - 10.50am

Lunch: 12.30pm - 1.20pm



Paparoa Friends of the School

Private group · 17 members

UPCOMING EVENTS



6th February - Waitangi Day: School is closed

11th February - Whole school Cricket sessions

12th February - Whanau Picnic 4.30 - 6.30pm

13th February - Hui Room 1 sharing

20th February - Whole school trip to Ruakaka Beach - Surf Lifesaving Day

26th February - BOT meeting 3.30pm

27th February - Environmental programme starts, Hui 1.45 Room 3 sharing

Tena Koutou, Ki Orana, Bula and Hello Whanau

Welcome back to school and the start of another exciting year at Paparoa School! We also send a very heartfelt welcome to all of our new whānau who have joined us this year both in the classes and preschool. We also extend a warm welcome to Mr James Parnell who is teaching in Room 2.

Over the holidays we finally had our kitchen roof completed. We have just a few minor finishing points to get done, such as the spouting but at least it won't leak anymore! We also had some painting completed in Room 1 & 2 and preschool class. It has definitely freshened the classes up.

You are going to hear me harp on about HERO!

This is our new Student Management System which everybody will have to be on to receive school information. All communication will be sent and received through this app. If you have not already, please make sure you download the app. Don't forget to turn on notifications. There are a lot more features on this app including being able to pay for things, and eventually see day to day learning. Student reports are also going to be seen through the app this year. Please see the information on how to get the app attached with this newsletter.



A & P Show

The Paparoa A & P show is being held on Saturday 7th February. This is always a great day full of fun and activities to do. In the hall, the school section is on display. If your child/ren received a placing for the Art, Craft or Handwriting at our Indoor Exhibit last October, please visit to see how they fared against the other district schools - Maungaturoto, Matakohe and Otamatea Christian School.

Buses

Taipuha Bus: This bus is currently full, no extras are allowed on until further notice.

Pahi Bus: This is full on Wednesdays, no extras are allowed on this day until further notice



BOT Meeting: 30th January 2026

The Board met to go through all the governing requirements for the start of the school year. Congratulations to Mrs Maureen Evans who was voted to continue being our school's Presiding Member.

There are a few mentions from the meeting:

1. Bi-election - Maureen and Myself are currently beginning to organise a bi-election due to not having enough elected members from last year. I will let you know when this is happening.
2. Strategic Plan for 2026 - our strategic plan has been reviewed and accepted for this year. This will be sent out through HERO and will also be available on our website and displayed at the office.
3. Attendance Management Plan was discussed and accepted. Our school community will be sent a copy through Hero, on the website and displayed in the office.
4. We had a zoom meeting with a company that is working with the Ministry of Education to get eligible schools to have solar panels to reduce electricity costs. We have agreed to start the process although there are a few stages that need to be accepted by the Ministry before we will find out if it will go ahead.
5. Property projects are continuing:
 - a. Deck matting: this was put on last July but has not lasted very well and will be refixed in February
 - b. We are waiting for contractors to come in and remove a tree near the orchard that is dying. The chestnut trees in the Ngahere are also going to have their branches cut down and privet removed.
 - c. Fencing is being organised to finish the native grove down in the bottom paddock.
 - d. We are also organising for the school buildings to get a good wash and spider spray.
6. Teacher Only Days 2026 - The Ministry of Education is allowing schools to have four teacher only days this year for Curriculum, Assessment and Reporting purposes. The Board has agreed to one TOD each term. We will be having this term's day on Thursday 2nd April, which is the last day of the term.

Put the 20th February in your calendar for our Ruakaka Beach Trip. This is for all current students. More information will be coming out through HERO. We will be travelling by bus and will need parent help for the day.

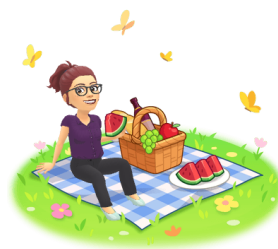
Stationery

Thank you to those whanau who have already organised stationery for their children. You are able to organise this through school and we can add it to your HERO account. You will be able to pay through the HERO app which we hope will make life a bit easier for everybody. Email Jane in the office: admin@paparoa.school.nz to let her know if we can help you with this.

Thursday 12th February: 4.30 - 6.30 pm

PAPAROA SCHOOL WHANAU PICNIC

Information will be sent out on HERO



Togs and towel each day while the weather is warm!!
Don't forget water bottles as well.

Nga Mihi

Karyn Taylor
Principal

Welcome to our New Students -
Jade, Ataahua & Grace



Congratulations to Avian, Lux, Quincy and their parents, Aroha & Osaka on The birth of your New Baby Girl - "Psalm"



OUR SUPPORTERS



Bradmore Farms
Hames Family



Yuri van Houten
northtanks@gmail.com