

# Paparoa School

14 Franklin Rd  
Paparoa 543  
www.paparoa.school.nz



Ph: 09 431 7379  
admin@paparoa.school.nz  
principal@paparoa.school.nz

## NEWSLETTER

## Na to mahi kaha whiwhi ai Success Through Effort

13 February 2023 now 16 February 2023

Tena Koutou, Ki Orana, Bula and Hello Whanau

Welcome to the 2023 year and what a start it has been. I sit here writing this in the dark as the rain is lashing us and the wind is breaking stuff.

Apart from the weather, we have had a great start to the year. The students have enjoyed their swimming and there has been some great discussion and writing around the giant pumpkins.

I would like to welcome Grant and Khasha Hobson and Zarina Finch to Paparoa School. Also a big welcome to Mrs Janine Sims who is working in Room 2 on Thursdays and Fridays.

The first of our Outdoor Education Projects is beginning to be organised. This is **Garden to Table**.

Garden to Table is a practical and engaging food education programme that connects the land, its care and potential, the food we harvest, its variety and versatility and the positive cultural and community connections associated with gardening, cooking and eating food. It is designed to teach life skills of gardening and cooking in a practical, hands-on learning environment, it also provides extensive curriculum resources for classroom teachers, families, volunteers and the wider community.

I am extremely excited to get this started although there is a lot of preparation to do. I am having a meeting for anybody who would like to come and hear about the programme and how they could help. This does not have to be a long-term commitment, nor is it full time. If you know any whanau or anybody in the community who might like to support this programme, please let them know about the following meeting:

**Garden To Table Volunteer Meeting, Paparoa School, Monday 20th February at 1.00pm**

**We are also beginning to look at stocking our kitchen, so I thought I would add some items to each newsletter. If you have spares of anything, we would appreciate the donation.**

Don't forget the fun night is now happening on Monday night. Can't wait to see you all there and cross fingers for a normal week.

Nga Mihi

Karyn Taylor  
Principal



### School Information

**Text: 0218686606**

**Skool Loop:** Paparoa School  
facebook.com/paparoaschool

**Bus Information:**

<http://song.easybus.nz>

### School Hours

8.30am to 2.25pm

Morning Tea: 10.30am - 11.00am

Lunch: 12.30pm - 1.10pm

### KITCHEN ITEMS WE NEED

3 x plastic citrus juicer  
3 x can opener  
2 Set of Measuring cups  
2 Set of Measuring spoons  
Mixing bowls  
8 Spatulas  
4 Wooden Spoons  
4 Flour Sifters  
8 Tongs

### HUI

**Next Hui (assembly) will be on:  
Thursday 23 February at 1.45pm**

**BACK TO SCHOOL SUPPORT  
SOS  
KAIPARA  
COMMUNITY CONNECTOR**

We can help support you with your education costs:-

- Uniform
- Stationery
- Transport Fees
- Tutoring
- Course Fees

**CONTACT US TODAY TO SEE IF YOU QUALIFY**

Cath 027 296 8172 | Kay 027 562 4756 | [cceferrals@soskaipara.co.nz](mailto:cceferrals@soskaipara.co.nz)

**Te Mahau Tahī  
Kaipara Term 1, 2023**

If you have a concern about your child's language development, learning progress, social and emotional wellbeing, or behaviour, Te Manawa Tahī have specialists available so you can discuss your concerns directly with them. This is a **FREE** service and each site will be identified by a Te Manawa Tahī sign or flag. Drop into a hub or make an appointment by phoning 0800 524 842 or emailing [TT.Support@education.govt.nz](mailto:TT.Support@education.govt.nz)



Ruawai JMB Rugby Club will be holding an AGM on Monday the 20th of February at 7pm at the Ruawai Community Sports Club. This is a good opportunity for anyone who wants to join the committee or to find out more about the club, to attend. The playing season usually commences in Term 2. Any queries regarding this, please do not hesitate to contact:

**Maryann McKinley, Secretary, Ruawai JMB Rugby Club, Ph 0212597992**

**SAVE THE DATE**

20/02/2023 - Family Fun Night  
4:30PM - 7:00PM Join Us at  
school

Pool Open, Games,  
Free Sausage sizzle & Ice Block

22/02/2023 - Hearing & Sight  
Testing

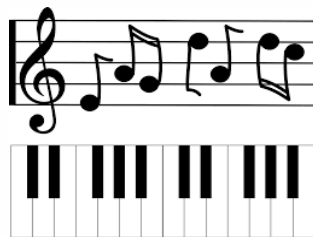
28/02/2023 - Junior Field Trip

14/03/2023 - Grandparents Day

17/03/2023 - Southern Zone  
swimming Comp

21/03/2023 - Senior Field Trip

**Are your children interested in learning the Piano?**



I am an experienced piano Teacher and have taught for many years in Wellington with great success. If you would like your child to learn in a fun environment please contact Jill: 021 08728957 or [pearsonjill93@gmail.com](mailto:pearsonjill93@gmail.com)

**LUNCHES TODAY AND TOMORROW**

**Ham roll up today**

**Chilli Con Carne on Friday**

**OUR SUPPORTERS**

**Bradmore Farms**  
Hames Family



**PETE  
THE  
BUILDER**  
your local friendly builder



Keeping the heart of  
New Zealand pumping

ADAM  
**STEVENS**  
BUILDER

We are delighted to advise Papanoa School are on the way to reaching the \$1,000 threshold for redemption.

Our current total is **\$279.**

Once you have reached your \$1,000 target you can redeem from a range of sports, technology, literacy and now **MUSIC** packages which will be hand delivered by your local Account Manager. The Fuel for Schools sponsorship programme has helped put over \$1.6 million dollars of resources into more than 600 rural schools. Just a reminder of how our school has received this donation...

Our school has been nominated by a local business/farm that receives bulk fuel deliveries from Fern, meaning that for every 100 litres of bulk fuel they purchase 50 cents is donated to their nominated school - which is us!

Many thanks so far to:-

Moore Equine Services Limited

Meghoven Farms Limited

R B Martin

S2M Farming Ltd

Trophy Valley Ltd

### Room 3 Math

Last week the students had to use shapes to create a picture. They were learning what shapes are made of like triangles (3 sides), squares (4 sides and 4 corners). They had a great time creating their pictures with their shapes.

